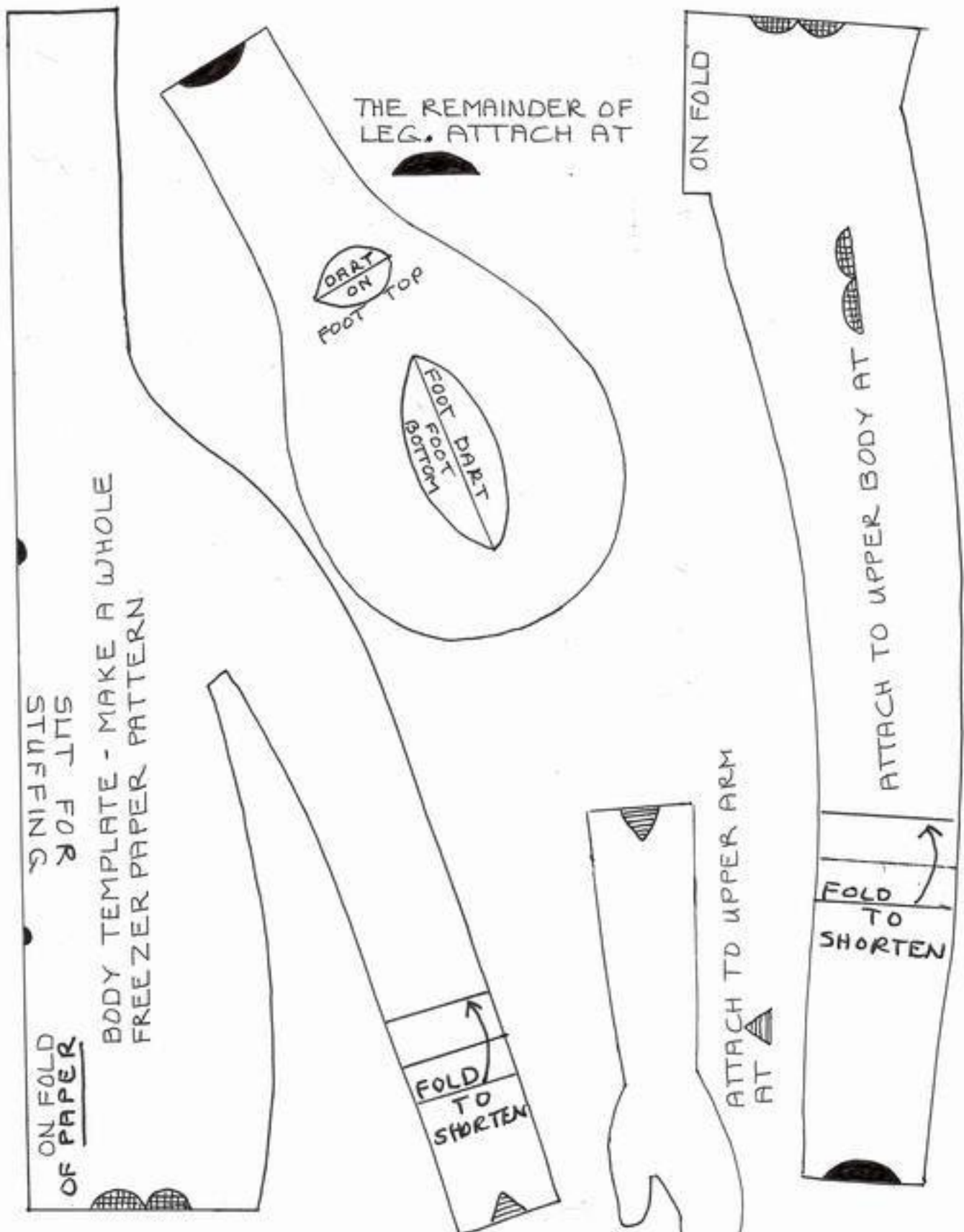
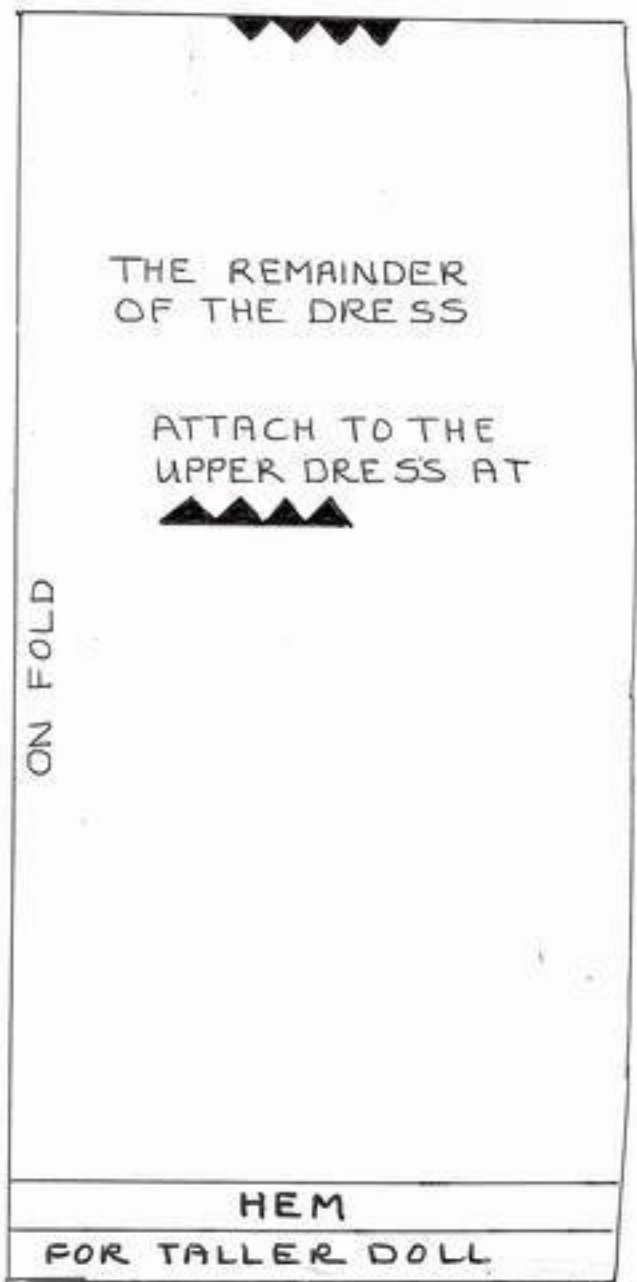
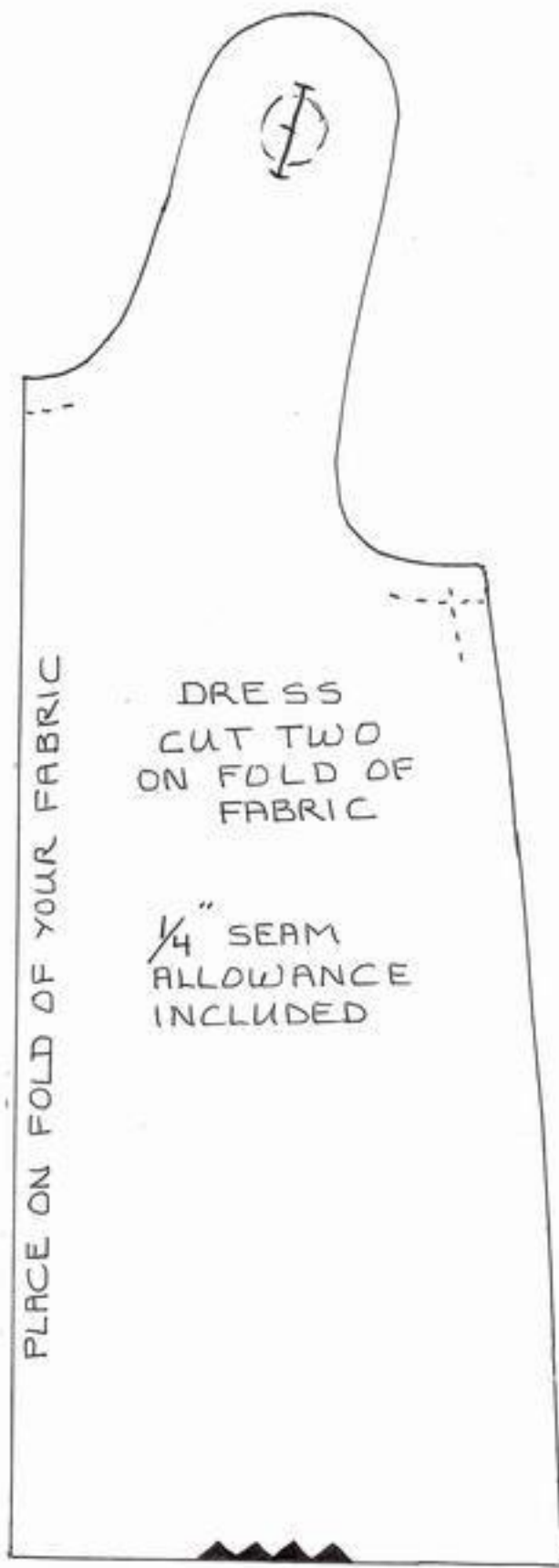


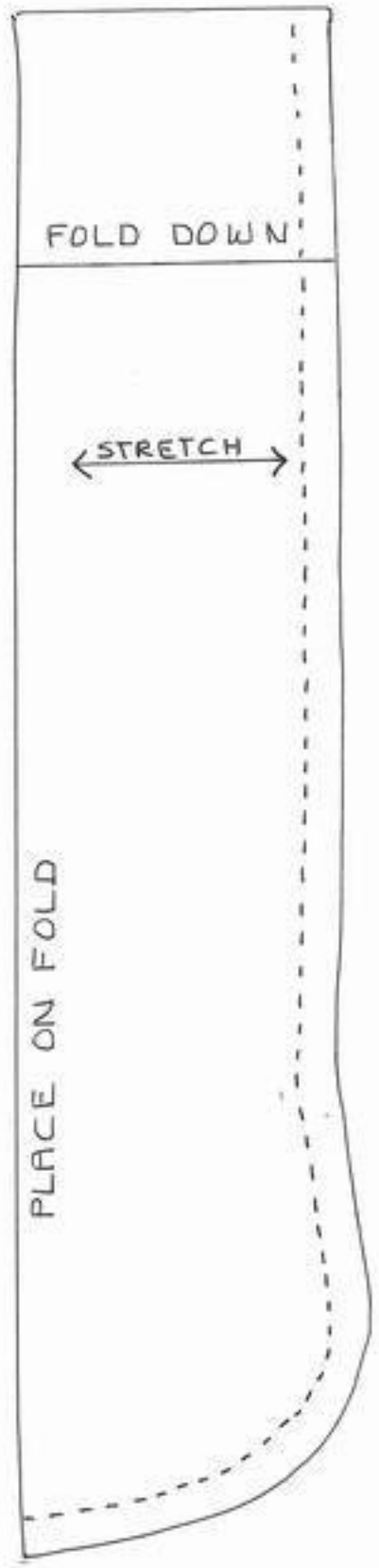
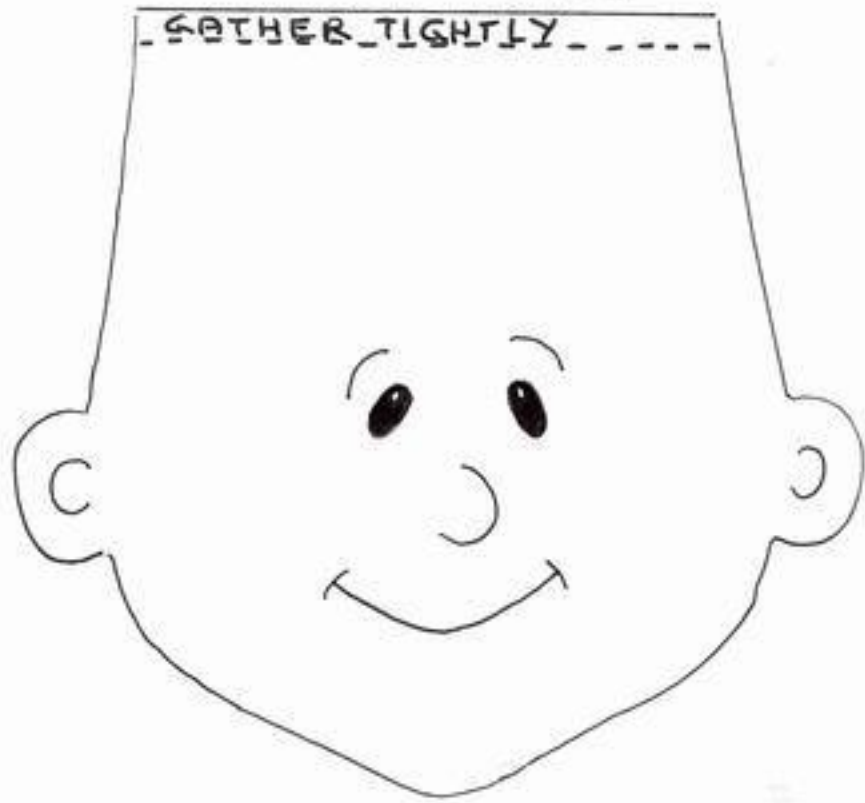
BLOOMERS  
CUT OUT ONCE FROM DOUBLE  
THICKNESS OF FABRIC



© JUDI WARD-JUDIS DOLLS 2008  
 ARTWORK BY BRAUN CO. - PERMISSION GIVEN FOR DOLL



HEM THE DRESS SHORTER  
FOR SHORTER DOLLS.



### **General Instructions:**

- From felt, cut 2 of the piece with the TOE OVERLAY PLACEMENT marked.
  - Cut 2 of the piece with the HEEL OVERLAY PLACEMENT marked.
    - Cut 2 Toe overlay pieces.
    - Cut 2 Heel overlay pieces.
  - Lay the overlay piece in place as shown on the pattern pieces.
    - Top stitch where shown on the pattern pieces.
  - Lay the heel piece around the toe piece matching the notches.  
It will look like a shoe now without a sole.
    - Look at the drawing of the shoe on the pattern page.
- Now, fit, pin and sew the shoe top to the shoe sole, matching the notches front and back.
  - Use a needle with string on it to "lace" the shoe.

**A note. The sock is the piece that is curved on one side and flat on the other.  
The flat edge goes on the fold of the stretchy sock fabric.**

**The Napkin Doll was done as a challenge so I did not do many directions.  
More pictures and directions can be found at  
<http://www.picturetrail.com/judisdolls>**