

# \*\*\*WIDE EYED WENDY\*\*\*

©2009 Judi Ward/Judi's Dolls

[www.judisdolls.com](http://www.judisdolls.com)

[www.thedollnet.com](http://www.thedollnet.com)

[www.picturetrail.com/judisdolls](http://www.picturetrail.com/judisdolls)

A "quicky" pattern for this little girl. All directions are on the pattern sheets. All pieces are templates except the dress. Wig and shoes not included. Order wigs and shoes from [www.crscrafts.com](http://www.crscrafts.com)

Do Your Own thing with this little dear.

For invisible jointing video see my web page.



Magazine ads for dolls similar to this, but vinyl, are in Doll Crafter and Costuming, Dolls, and Contemporary Doll Collector.



Face drawn lightly. There is a little wood bead in the nose area.



This face is about actual size.



\*\*\*In the Beginning\*\*\*

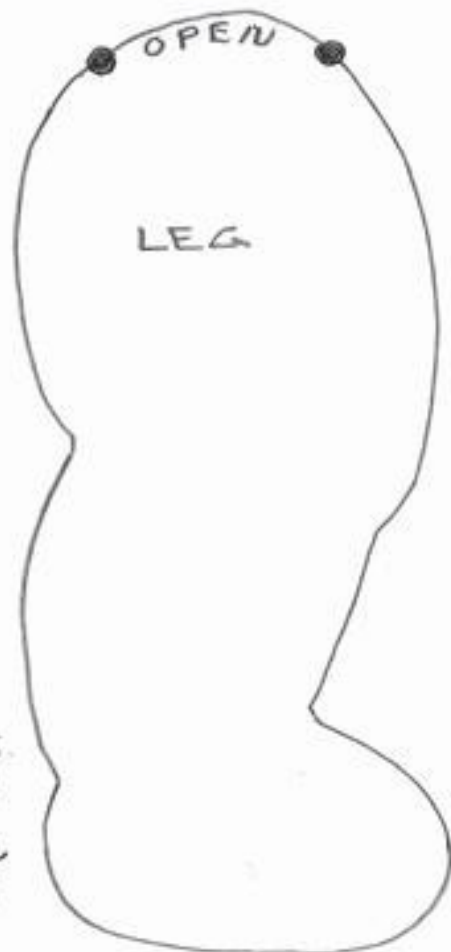
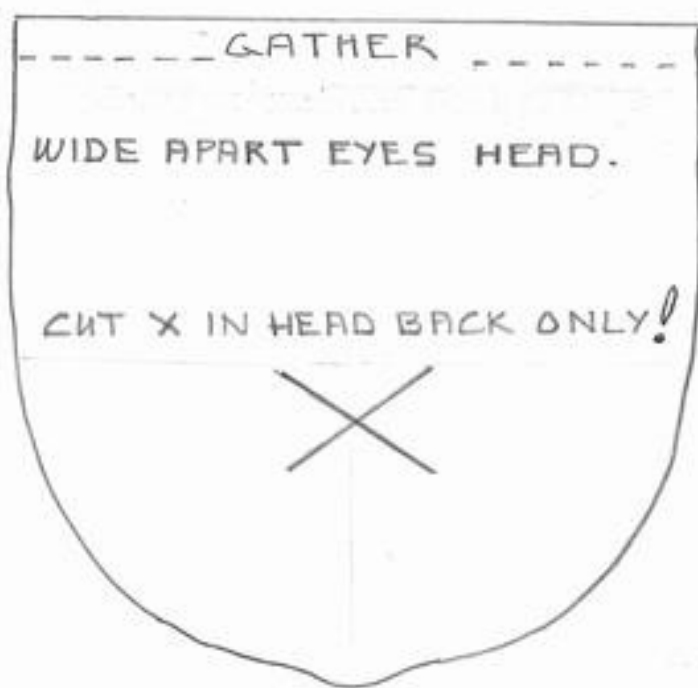
An EXACT DESIGN from the Beginners Design Class techniques. A good doll ALWAYS comes from the method, even for those who have never designed anything in their lives \*\*\*and\*\*\* any type of doll can be designed, from baby to lady to gnome to man...ANYTHING!



Trying on the wider head, by bunching up the top. The pattern here just needs to be gathered though. I already "proofed" it.

Use your best dollmaking skills and have fun with Wide Eyed Wendy!

DOLLY HUGS, JUDI



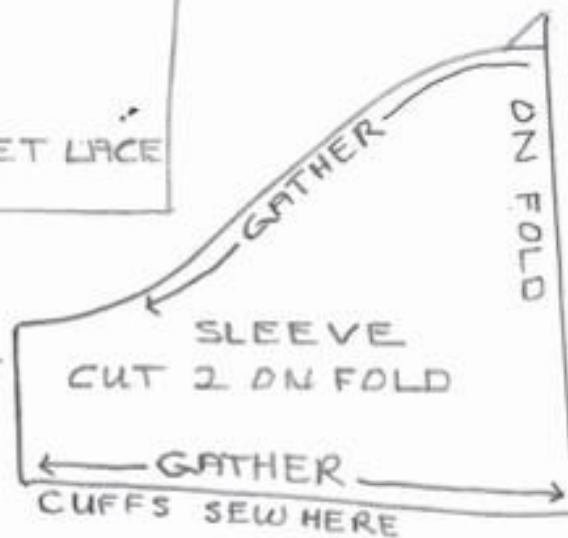
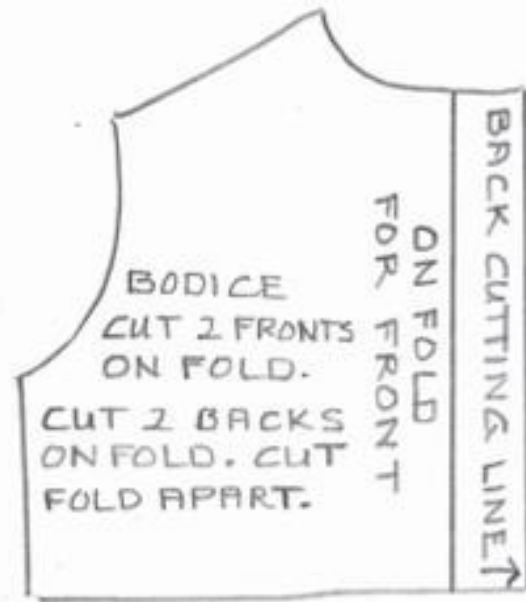
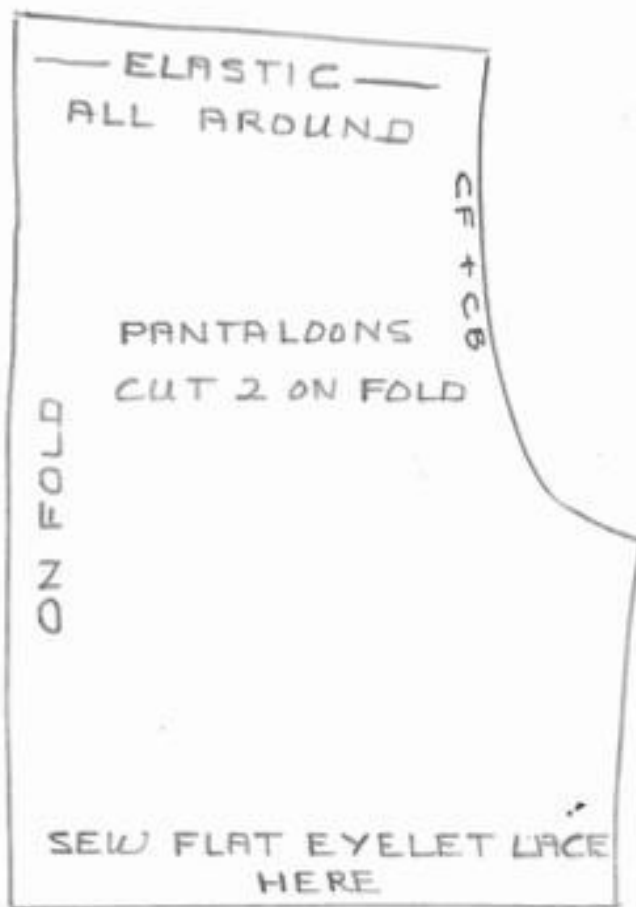
MAKE TWO ARM & LEG TEMPLATES.  
IRON ALL TEMPLATES TO "FUZZY"  
SIDE OF VELOUR. SEW AROUND,  
THEN CUT OUT, ONE EIGHTH INCH  
FROM SEWING. TURN, STUFF,  
CLOSE OPENINGS, JOINT, FINISH.



USE CRAFT VELOUR... I USED "IVORY"

ALL PIECES ARE TEMPLATES.. PLACE "GIVE"  $\longleftrightarrow$   
MAKE ALL TEMPLATES FROM FREEZER PAPER.

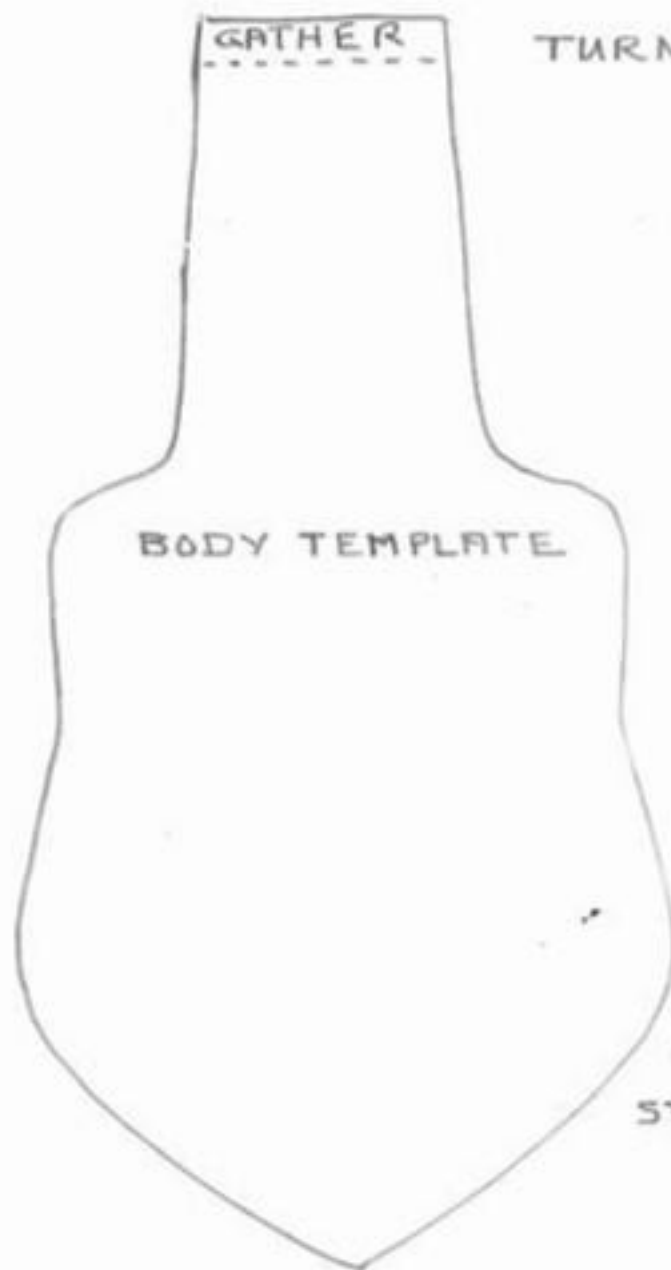
...BASIC DRESS & PANTALOONS...  
STOCKINGS-ATTACHED PETTICOAT & APRON.



$\frac{1}{4}$ " SEAMS  
INCLUDED FOR  
CLOTHES-EXCEPT  
STOCKINGS.

DRESS SKIRT IS 20" X 4"  
ATTACHED PETTICOAT IS 18" X 4"  
APRON IS 3" WIDE EYELET, 5" LONG,  
PETTICOAT HAS 1" WIDE EYELET AT THE  
HEM. SKIRT IS HEMMED NARROWLY.  
PETTICOAT PEEKS FROM UNDER THE SKIRT

SLEEVE BAND IS 1" WIDE EYELET TOO.  
MEASURE YOUR DOLLS STUFFED ARM. ADD 1".  
CUT EYELET CUFFS THAT LONG.  
SHOES CAN BE 2" TO 2  $\frac{1}{4}$ " LONG. C.R.S CRAFTS.



TURN & STUFF THROUGH NECK.



TIE HEAD ON.. POKE <sup>3</sup>IN.  
STITCH ON IF DESIRED.

A FUN NOTE... THIS HEAD WILL FIT ONTO  
MY "BLEUETTE IN CLOTH," BALL JOINTED  
DOLL PATTERN WHICH IS A "DOWNLOAD"  
CLASS AT [WWW.THE DOLL NET.COM](http://WWW.THE DOLL NET.COM)  
THE REAL, WIDE EYE DOLLS ARE BALL  
JOINTED!

DO YOUR OWN THING FOR HAIR. MY DOLL  
HAS A CR5 CRAFTS "WISPY" CUT WITH BANGS  
12"-13"...ORDER 11" WIGS FOR FULL CAP WIGS.